



FRESE INTEGRALI
IN METALLO DURO





Milano

AFFILATURA



Con 30 anni di esperienza nel settore, la nostra azienda da sempre investe in nuove tecnologie utilizzando macchinari e software di ultima generazione. Specializzata nella costruzione e affilatura di utensili standard e a disegno, si occupa non solo di utensileria meccanica, ma estende il suo know how anche nell'industria della carta, del legno ed alimentare.



**FRESE PER LAVORAZIONI
DI ALLUMINIO E LEGHE LEGGERE**

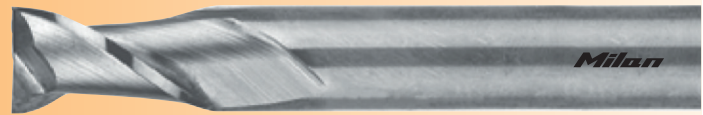
SERIE AL

FRESE PER LAVORAZIONI UNIVERSALI

SERIE ST



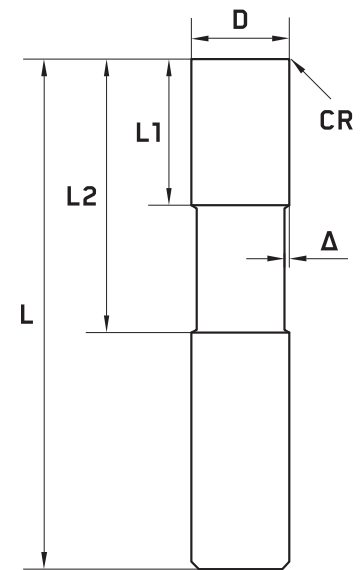
FRESE 2 TAGLIENTI



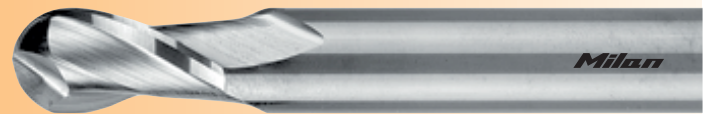
SERIE AL

Codice	D	Z	L	L1	L2	Δ	CR
HM0502RAL	5	2	50	14			•
HM0502XAL	5	2	100	10	40		•
HM0602RAL	6	2	57	14			•
HM0602XAL	6	2	100	12	45	0,10	•
HM0802RAL	8	2	63	14			•
HM0802XAL	8	2	100	14	50	0,10	•
HM1002RAL	10	2	72	23			•
HM1002XAL	10	2	100	12	50	0,15	•
HM1102RAL	11	2	72	23			•
HM1202RAL	12	2	83	28			•
HM1202XAL	12	2	150	18	70	0,15	•
HM1302RAL	13	2	83	28			•
HM1402RAL	14	2	83	28			•
HM1602RAL	16	2	92	35			•
HM1602XAL	16	2	150	20	80	0,20	•
HM1802RAL	18	2	100	30			•
HM2002RAL	20	2	104	40			•
HM2002XAL	20	2	150	25	80	0,20	•

• CR a richiesta

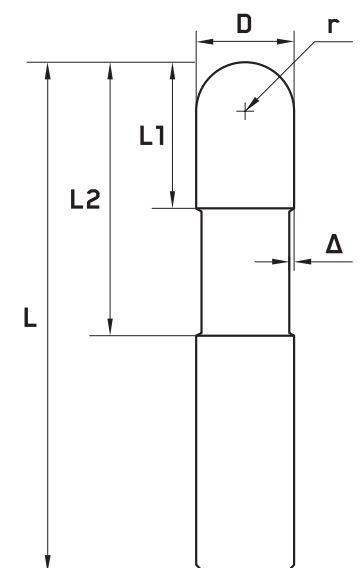


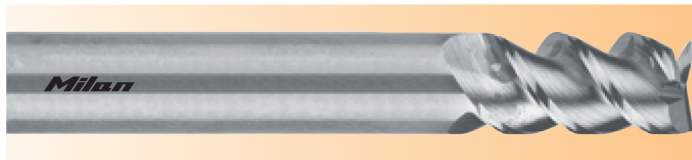
FRESE 2 TAGLIENTI RAGGIATE



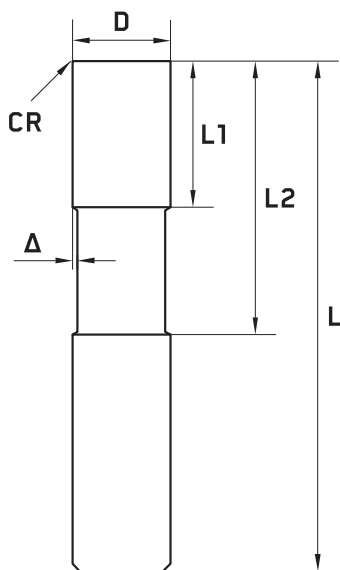
SERIE AL

Codice	D	Z	L	L1	L2	Δ	r
HMS0502025RAL	5	2	50	12			2,5
HMS0502025XAL	5	2	100	12	40	0,10	2,5
HMS0602030RAL	6	2	57	13			3,0
HMS0602030XAL	6	2	100	13	40	0,10	3,0
HMS0802040RAL	8	2	63	20			4,0
HMS0802040XAL	8	2	100	15	45	0,10	4,0
HMS1002050RAL	10	2	72	22			5,0
HMS1002050XAL	10	2	100	15	50	0,15	5,0
HMS1202060RAL	12	2	83	25			6,0
HMS1202060XAL	12	2	150	18	80	0,15	6,0
HMS1602060RAL	16	2	92	30			8,0
HMS1602060XAL	16	2	150	22	80	0,20	8,0
HMS2002060RAL	20	2	104	38			10,0





FRESE 3 TAGLIANTI

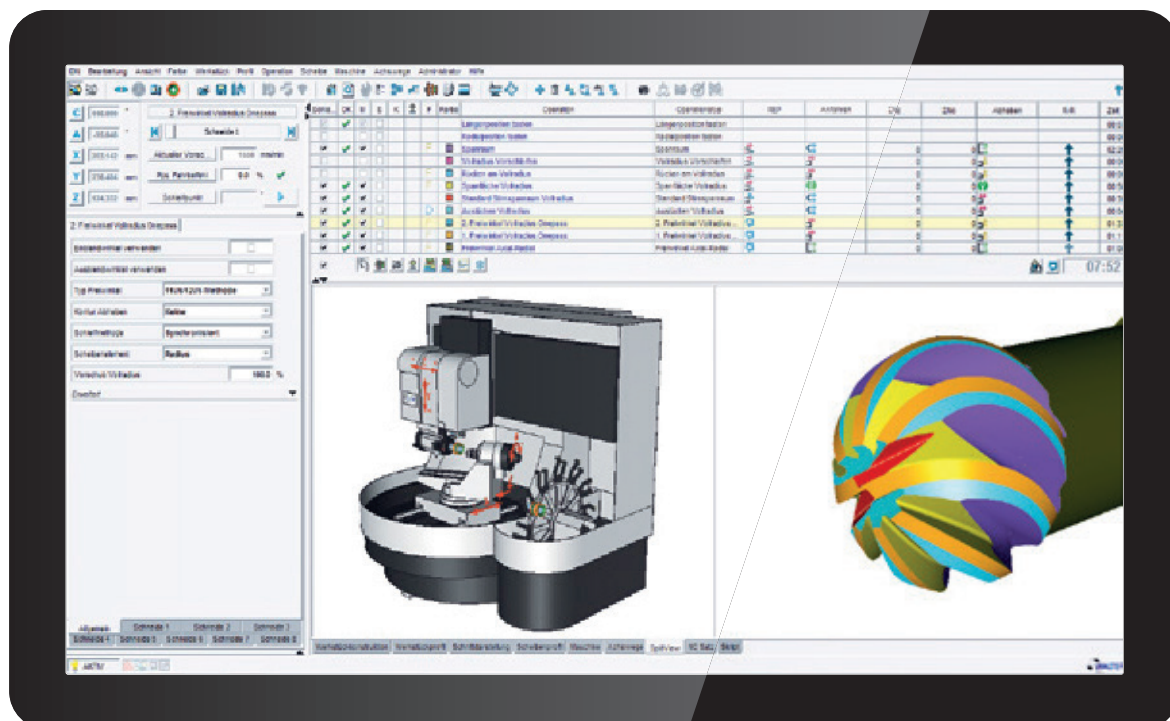


Codice	D	Z	L	L1	L2	Δ	CR
HM0503RAL	5	3	50	10			•
HM0603RAL	6	3	57	10			•
HM0603XAL	6	3	100	14	20	0,10	•
HM0803RAL	8	3	63	18			•
HM0803XAL	8	3	100	16	25	0,10	•
HM1003RAL	10	3	72	20			•
HM1003XAL	10	3	100	18	35	0,15	•
HM1203RAL	12	3	83	25			•
HM1203XAL	12	3	100	18	40	0,15	•
HM1403RAL	14	3	83	22			•
HM1603RAL	16	3	92	28			•
HM1603XAL	16	3	130	22	50	0,20	•
HM2003RAL	20	3	104	32			•
HM2003XAL	20	3	150	25	55	0,20	•

SERIE AL

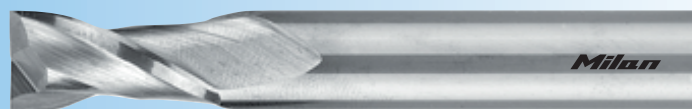
• CR a richiesta

Design, programmazione, simulazione e produzione



SERIE AL

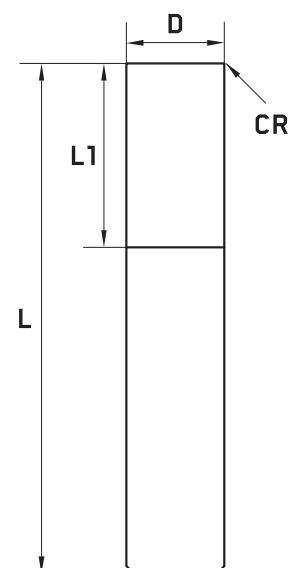
FRESE 2 TAGLIENTI



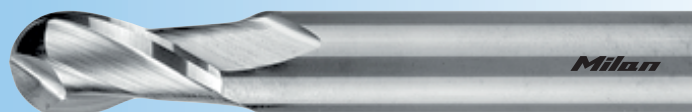
SERIE ST

Codice	D	Z	L	L1	CR
HM0602RST	6	2	57	16	•
HM0602XST	6	2	75	16	•
HM0802RST	8	2	63	18	•
HM0802XST	8	2	75	18	•
HM1002RST	10	2	75	21	•
HM1002XST	10	2	100	21	•
HM1102RST	11	2	75	21	•
HM1202RST	12	2	83	24	•
HM1202XST	12	2	100	24	•
HM1402RST	14	2	83	27	•
HM1402XST	14	2	150	27	•
HM1602RST	16	2	92	30	•
HM1602XST	16	2	150	30	•
HM2002RST	20	2	104	36	•

• CR a richiesta

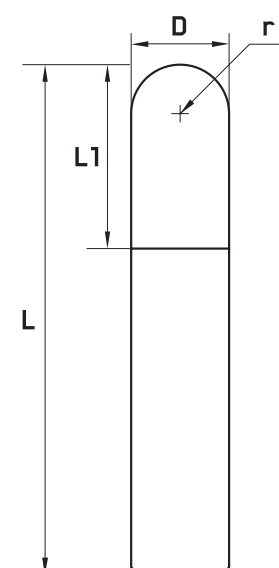


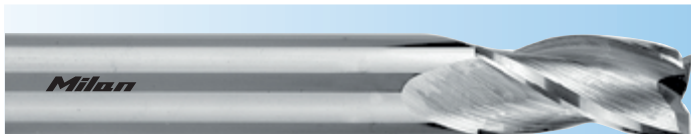
FRESE 2 TAGLIENTI RAGGIATE



SERIE ST

Codice	D	Z	L	L1	r
HM060203RST	6	2	57	16	3,0
HM060203XST	6	2	75	16	3,0
HM080204RST	8	2	63	18	4,0
HM080204XST	8	2	75	18	4,0
HM100205RST	10	2	75	21	5,0
HM100205XST	10	2	100	21	5,0
HM120206RST	12	2	83	24	6,0
HM120206XST	12	2	100	24	6,0
HM140207RST	14	2	83	27	7,0
HM140207XST	14	2	150	27	7,0
HM160208RST	16	2	92	30	8,0
HM160208XST	16	2	150	30	8,0
HM200210RST	20	2	104	36	10,0
HM200210XST	20	2	150	36	10,0



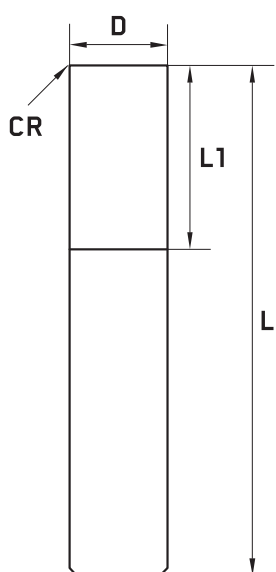


FRESE 3 TAGLIENTI



90°

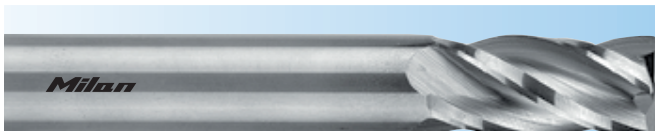
CR



Codice	D	Z	L	L1	CR
HM0603RST	6	3	57	16	•
HM0603XST	6	3	75	16	•
HM0803RST	8	3	63	18	•
HM0803XST	8	3	75	18	•
HM1003RST	10	3	75	21	•
HM1003XST	10	3	100	21	•
HM1103RST	11	3	75	21	•
HM1203RST	12	3	83	24	•
HM1203XST	12	3	100	24	•
HM1403RST	14	3	83	27	•
HM1403XST	14	3	150	27	•
HM1603RST	16	3	92	30	•
HM1603XST	16	3	150	30	•
HM2003RST	20	3	104	36	•

SERIE ST

• CR a richiesta

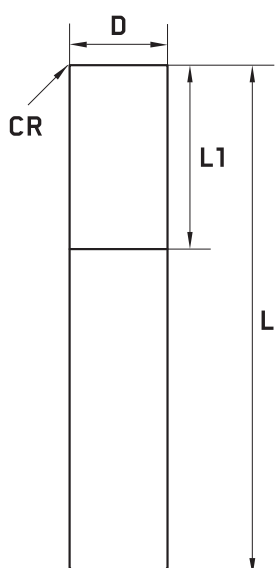


FRESE 4 TAGLIENTI



90°

CR



Codice	D	Z	L	L1	CR
HM0604RST	6	4	57	16	•
HM0604XST	6	4	75	16	•
HM0804RST	8	4	63	18	•
HM0804XST	8	4	75	18	•
HM1004RST	10	4	75	21	•
HM1004XST	10	4	100	21	•
HM1104RST	11	4	75	21	•
HM1204RST	12	4	83	24	•
HM1204XST	12	4	100	24	•
HM1404RST	14	4	83	27	•
HM1404XST	14	4	150	27	•
HM1604RST	16	4	92	30	•
HM1604XST	16	4	150	30	•
HM2004RST	20	4	104	36	•

SERIE ST

• CR a richiesta



📍 Strada Grange 7/A 10070 Front (TO)

📞 +39.011.9220021

📄 +39.011.9201223

✉️ milan.affilatura@libero.it

🌐 www.affilaturautensili.it

